

Arrow PROPANE
TANK AND ENGINEERING CO.



**BOBTAIL STANDARD
FEATURES**

STANDARD FEATURES

BUILDING A BETTER BOBTAIL

These are all standard features available on Arrow bobtails. If there are options that are not listed here but you would like included on your bobtail, check out our optional features pdf or ask your representative at Arrow. We can accommodate almost any requests.



Electrical

Chassis connections are mounted in a central location. Electrical distribution with fuses and relays, RF receiver, and pressure switches. Blue split loom identifies Arrow wiring throughout the bobtail.



Lighting

Dual 50 watt docking lights mounted in skirting with 55° projection angle and interior rock guards (not shown).



Voltage for the LED light fixtures with anti-theft rings is supplied by molded wire harnesses with plug and seal connections for extreme durability and accessibility.



High mount LED stop and turn lamps with a combined 200 watts in stadium work lights on the back of the trucks provide the ultimate visibility.



STANDARD FEATURES

BUILDING A BETTER BOBTAIL

Meters and Controls

2" Liquid Controls meter with LCR II electronic register. Includes electronic temp compensation, 2-stage valve for accurate preset delivery, and cab mounted slip printer.



Printers and remote slip printer mounted in the cab is included with the standard LC meter and LCR2 electronic register package.



Your choice of RF remote system with rechargeable lithium ion battery and 12 volt DC charger.



Piping

3" Spray Fill includes 3" coupling welded in tank with 3" back check (liquid capacity = 297 GPM @ 5 PSIG differential pressure).

A flexible connector absorbs twisting irregularities between the chassis and deck. A butt-weld long radius 90° elbow promotes smooth flow into the meter.



A shutoff valve is installed to isolate pump discharge piping from meter inlet and external bypass piping.



Meter discharge piping includes stainless steel ball valve (flanged body) with flexible connector and swivel adapter.

STANDARD FEATURES

BUILDING A BETTER BOBTAIL



Hose Reel

Hose reels in stainless steel or aluminum construction include double captive or Guidemaster hose roller, Polar-Flex delivery hose, quick acting valve, and stainless steel hose end swivel.



Our hose reels provide ultimate performance and durability with brass a pinion gear and #40 chain/sprockets.

Greaseable large diameter inside and outside bearings facilitate low friction and long life.



Standard location for the easy to read flange mounted visual float gauge is in rear head. Options include recessed mount located in a variety of positions.



Heavy duty explosion proof 2/3 HP motor with stainless steel shaft receives voltage from corrosion resistant molded cable. Extra measures that ensure superior performance and longevity in any environment.



Carburetion fittings on Arrow bobtails are commonly utilized for LP alternative fuel injection and heat-exchangers. The liquid carb fitting (rearmost shown) is standard on Arrow bobtails.

STANDARD FEATURES

BUILDING A BETTER BOBTAIL

Internal Pump

Internal pump discharge (IPD) places the majority of discharge piping inside the tank. Added benefits are safety, cleanliness, and lower costs for future remounts.

Piping for the pump discharge and re-entry to the tank is accomplished with a single piece of die formed 2 inch schedule 80 pipe. Each end of the pipe is welded to flange connections for added serviceability and to minimize leaks.

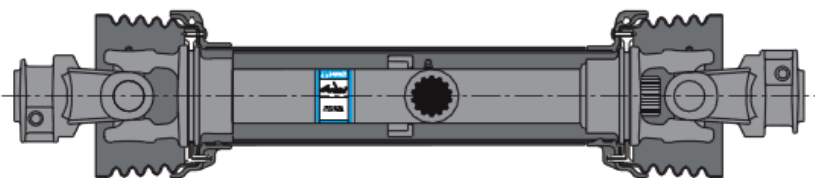
The internal valve (ISC) is actuated by a brake chamber. Over 20 years ago we began using this design with great success. Chambers have proven to be an extremely durable and reliable under chassis component despite long term exposure to the harshest elements.



Muncie PTO's with internal clutch shift are standard equipment to drive the PTO shaft and product pump. Direct engagement of the PTO is accomplished via air toggle switch and/or RF remote.

PTO Shaft

PTO shaft assemblies are shielded and telescoping with splined slip sleeves. Grease zerk fittings are provided on the complete PTO shaft assembly for lube maintenance of the u-joints, slip yoke, slip sleeve, and pillow block bearings. The flexible guard cones at each end can be pulled back for access to the fittings.



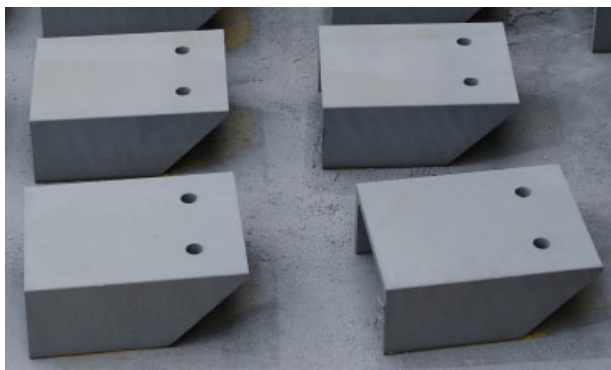
STANDARD FEATURES

BUILDING A BETTER BOBTAIL

Material thickness and finish are very important considerations with regard to performance and long term surface refurbishing. Arrow Tank's models are engineered to last the lifetime of the tank and look good as new for the duration.



Arrow uses 10 gauge rear decks and 12 gauge fender thicknesses. Compromising with thinner material typically results in deformation and dimpling from road debris, especially on the fender.

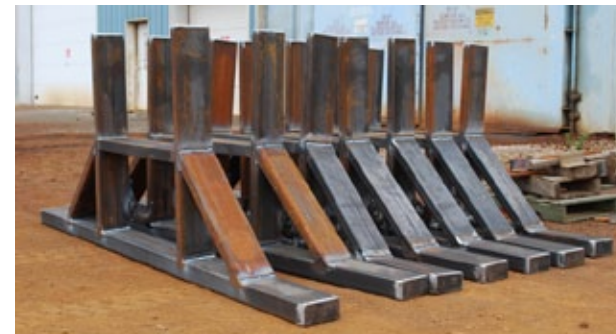


Manufactured from structural steel channel our vessel tie-downs meet or exceed DOT supporting and anchoring requirements.

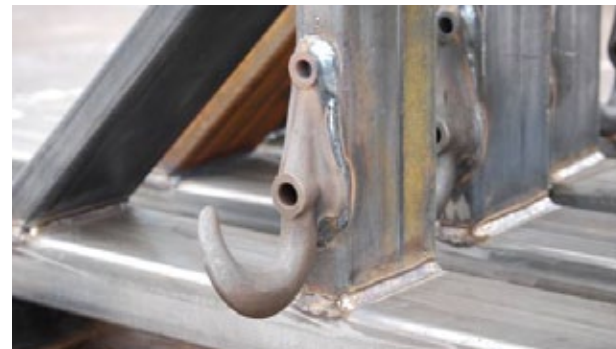


Tie-down assemblies are specifically engineered with an anti-shift feature to limit movement and account for added stresses due to impact in the event of an accident.

Rear bumpers fabricated from rectangular tubing meet or exceed DOT rear-end tank protection requirements. The bumper face is made with stainless steel to ensure survival among the unforgiving sodium chloride ice melt and constant battery of road debris.



Two heavy duty tow hooks are welded to the bumper frame.



STANDARD FEATURES

BUILDING A BETTER BOBTAIL

HISTORY...

From quote to completed bobtail, Arrow Tank & Engineering will take extra measures to make certain your needs are satisfied. Serving the industry fabricating vessels and bobtails for over 50 years the most important value we've learned is to "listen to our customers".

NOT JUST A BOBTAIL...

A bobtail serves as a multifunction tool for the marketer. A bobtail is not just a vehicle that pumps gas; it also acts as a mobile office, information center, and a top source for advertising.

QUALITY & DEPENDABILITY...

We do not build "cookie cutter" bobtails and will not sacrifice quality in materials or craftsmanship to sell merely based on price. We use only the highest quality materials in the bobtails we manufacture. Take a close look at our bobtails and let them speak for themselves. From Sales to Engineering to Production every employee at Arrow Tank puts their stamp of pride on each bobtail we manufacture.

TOTAL VALUE...

Based on the materials and quality our bobtails are competitively priced. Arrow Bobtails have stood the test of time and we continue to improve. The performance and quality engineered in the bobtails we manufacture is second to none.

